

# CÔNG TY TNHH MTV GOLD SOLAR

2 Nguyễn Thái Bình, P. 4, Q. Tân Bình, TP. Hồ Chí Minh  
 Tel : 0909999464 / 0903086161 - Fax : 28 39482436  
 www.goldsolars.com - www.goldsolars.vn  
 Email : gse@goldsolars.vn - goldsolar.gse@gmail.com

## GSE72HC 9BB 430-450Watt

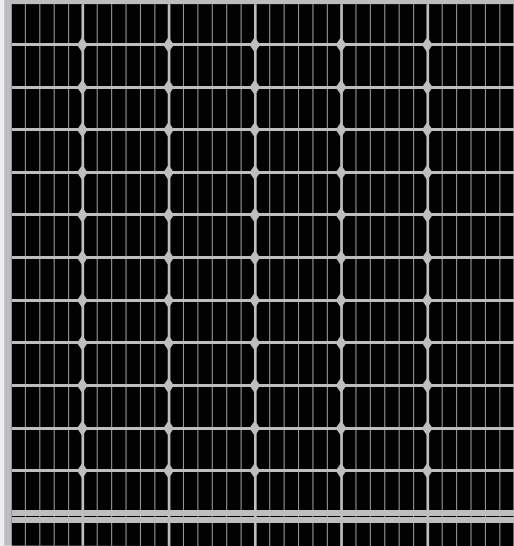
MONO PERC HALF CELL MODULE

Positive power tolerance of 0~+3%

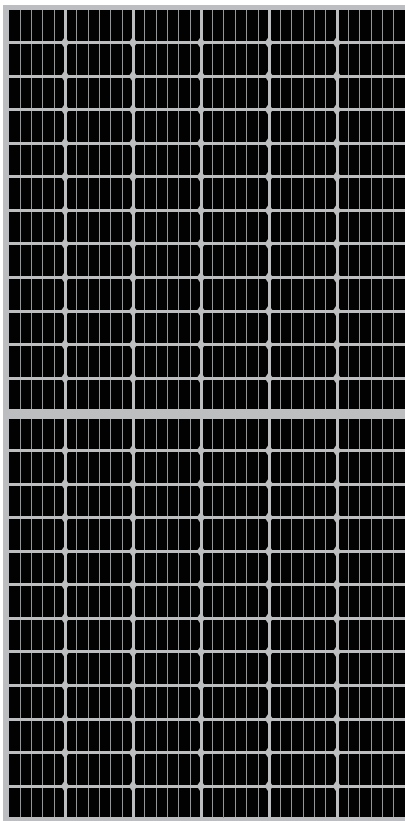
- Half Cell 166\*83mm
- Mono PERC 144 Cell

**Mult BusBar  
9BB**

9BB Half Cell 450W 166mm



Insurance by CHUBB®



### KEY FEATURES



#### 9 Busbar Solar Cell

9 busbar solar cell adopts new technology to improve the efficiency of modules, offers a better aesthetic appearance, making it perfect for rooftop installation.



#### High Efficiency

Higher module conversion efficiency (up to 20.38%) benefit from half cell structure (low resistance characteristic).



#### PID Resistance

Excellent Anti-PID performance guarantee limited power degradation for mass production.



#### Low-light Performance

Advanced glass and cell surface textured design ensure excellent performance in low-light environment.



#### Severe Weather Resilience

Certified to withstand: wind load (2400 Pascal) and snow load (5400 Pascal).

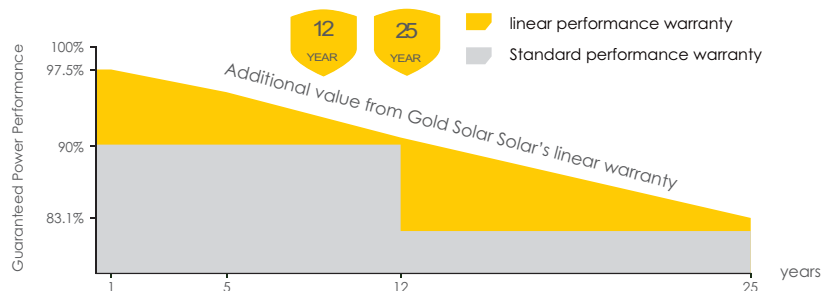


#### Durability Against Extreme Environmental Conditions

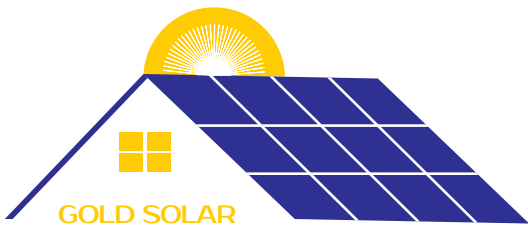
High salt mist and ammonia resistance certified by TUV NORD.

### LINEAR PERFORMANCE WARRANTY

12 Year Product Warranty • 25 Year Linear Power Warranty



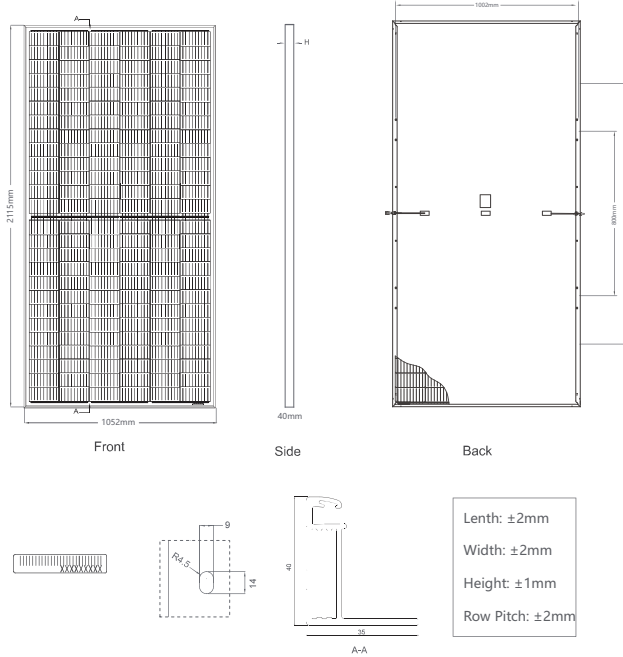
9th Floor, 940, 44 Montgomery St, Suite 3300, San Francisco, CA - 94104, USA



# CÔNG TY TNHH MTV GOLD SOLAR

2 Nguyễn Thái Bình, P. 4, Q. Tân Bình, TP. Hồ Chí Minh  
 Tel : 0909999464 / 0903086161 - Fax : 28 39482436  
 www.goldsolars.com - www.goldsolars.vn  
 Email : gse@goldsolars.vn - goldsolar.gse@gmail.com

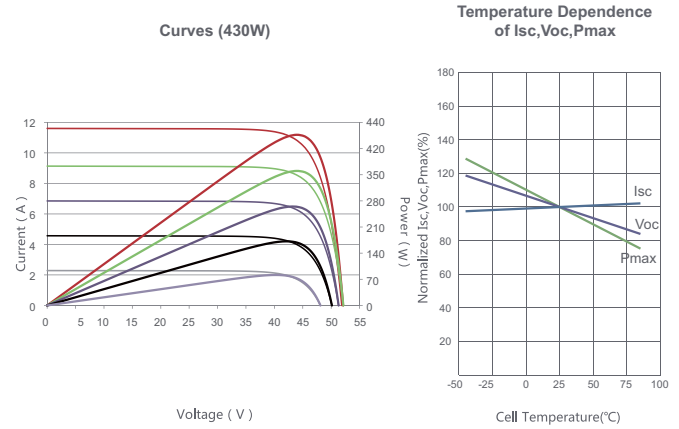
## Engineering Drawings



## Packaging Configuration

27pcs/pallet, 22pallet 594pcs/40'HQ Container

## Electrical Performance & Temperature Dependence



## Mechanical Characteristics

Mono PERC Half Cell 166×83mm 9BB	
No. of cells	144 (6×24)
Dimensions	2115×1052×40mm
Weight	25.50 kg
Front Glass	3.2mm, Anti-Reflection Coating, High Transmission, Low Iron, Tempered Glass
Frame	Anodized Aluminium Alloy
Junction Box	IP68 Rated
Output Cables	TÜV 1×4.0mm <sup>2</sup> , Length 300mm or Customized Length

## SPECIFICATIONS

Module Type	GSE72HC 9BB-420W	GSE72HC 9BB-425W	GSE72HC 9BB-430W	GSE72HC 9BB 435W	GSE72HC 9BB-440W
	STC	STC	STC	STC	STC
Maximum Power (Pmax)	430Wp	435Wp	440Wp	445Wp	450Wp
Maximum Power Voltage (Vmp)	40.19V	40.40V	40.60V	40.81V	41.01V
Maximum Power Current (Imp)	10.45A	10.52A	10.59A	10.66A	10.73A
Open-circuit Voltage (Voc)	48.88V	49.00V	49.20V	49.39V	49.59V
Short-circuit Current (Isc)	11.04A	11.11A	11.18A	11.25A	11.32A
Module Efficiency STC (%)	19.98%	20.09%	20.23%	20.45%	20.60%
Operating Temperature (°C)	-40°C~+85°C				
Maximum System Voltage	1000VDC (UL) / 1500VDC (IEC)				
Maximum Series Fuse Rating	20A				
Power Tolerance	0~+3%				
Temperature Coefficients of Pmax	-0.36%/°C				
Temperature Coefficients of Voc	-0.29%/°C				
Temperature Coefficients of Isc	0.048%/°C				
Nominal Operating Cell Temperature (NOCT)	45±2°C				



9th Floor, 940, 44 Montgomery St, Suite 3300, San Francisco, CA - 94104, USA